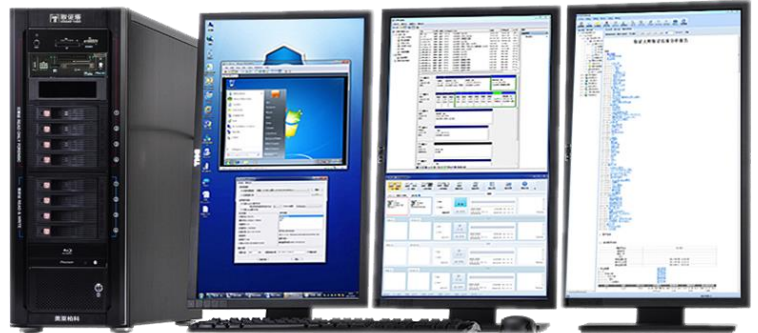


# Forensic Tower

High Efficiency Forensics Workstation

Forensic Tower is a forensic workstation that provides rich interfaces, concurrent data duplication, parallel analysis and OS emulation, and is compatible with various kinds of forensic software.



## Parallel Forensic Technology (PFT)

- The PFT makes a leap in promoting duplication speed that can reach up to 27G/min. It supports 4-channel parallel clone or 8-channel parallel analysis to make the investigation 8 times faster.
- Users can load several hard disks (maximum 8) into Forensic Tower for analysis or keyword search with special optimization by PFT and multi-task management, which make full use of CPU and extremely save time and cost.



### Super Compatible

- All the popular digital forensic software (Forensic Master, EnCase, FTK, etc) can run in Forensic Tower with perfect performance

### Digital Analysis

- System artifacts analysis: access logs of USB device connection and applications, last opened files, recycle bin, etc.
- Registry key recovery and logs of last modified time
- Quickly search & locate anti-forensic software and encrypted files
- Support video framing divisions
- Live forensic functions enable investigators to gather dynamic information of running computer as system process, IM accounts and passwords, Internet history and logs
- Customizable strategies
- Report

### Emulation

- Emulate the operation system of servers or PCs, provide intuitive environment to investigate malware, database, applications with saved login password, Internet traces etc.
- Support emulation from hard disks and images
- Fully automatic dynamic emulation
- Support the following operating systems: Windows 2000/2003/XP/Vista/7/8, MAC OS X 10.x, Linux (Ubuntu 13.10)
- Password bypassing for Windows and MAC OS

### Intelligent Design

- 8 built-in write-blockers (4 of them switchable)
- Support all-sized HDD and HDD ports on panel are hot-plugging with cable-free design
- Ventilated bays protect hard disks from overheating

## Specifications

Item	Specification
<b>Product Name</b>	Forensic Tower
<b>Model Name</b>	DEM-FT
<b>CPU</b>	Intel i7-6700K/4.0G
<b>MEM</b>	16GB x2
<b>Hard Drive</b>	8TB x1; SSD 480G
<b>OS</b>	Windows 7 64bit Ultimate (English)
<b>Software</b>	Duplicator software; Forensics Analysis Software (optional)
<b>Video Card</b>	1G DDR5

*Specifications are subject to change without notice.*