

Forensic Magicube

All-in-One Solution for Scene Digital Investigations

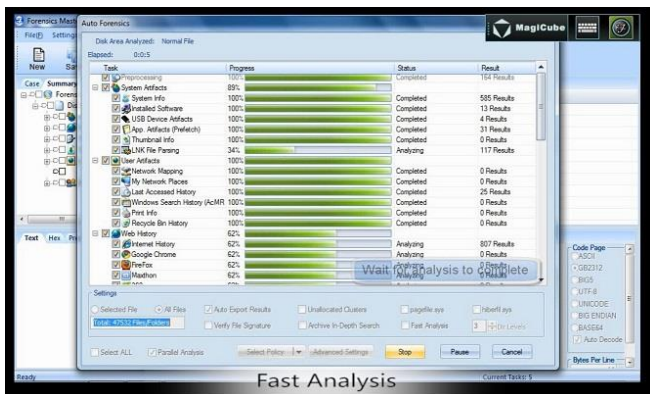
Hard Drive Duplication

- 1-to-1, 1-to-2, 2-to-2 disk duplication
- Support IDE, SATA, SAS, SCSI, USB
- Duplication speed up to 11GB/min
- Keyword searching during duplication
- Acquisition in HPA/DCO protected area
- Support MD5 and SHA-1 hashing during duplication
- Remote duplication through network



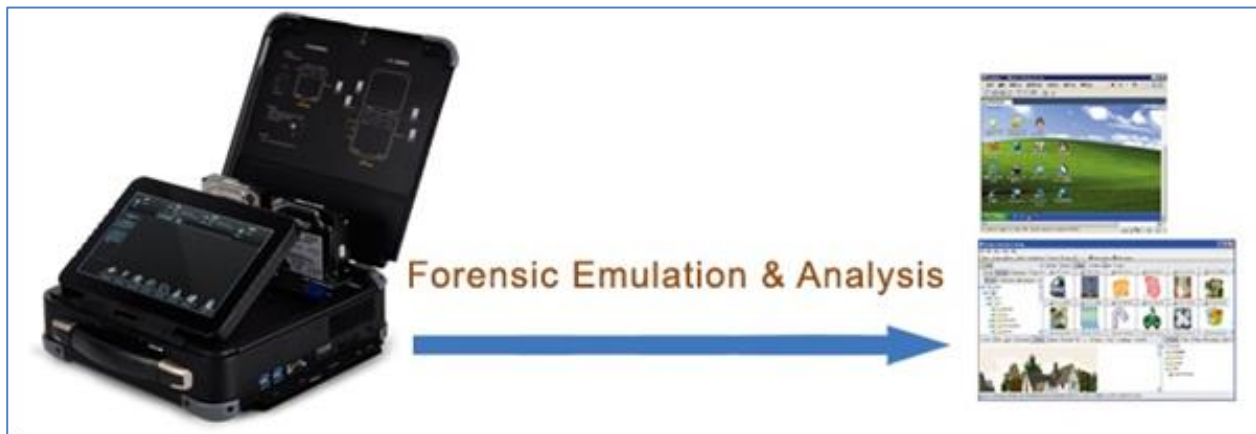
Forensic Analysis

- Quick and automated forensic analysis
- Shortcut preview on evidence
- Analyze USB device usage history, user accessory history, IE browser history information, Fetion / AliIM Trade Manager / SKYPE / MSN chat history
- Quickly recover deleted mails on Foxmail and Outlook Express



Forensic Emulation

- OS emulation allows a direct view on the suspect computer
- Dynamic emulation helps malware / website / database analysis
- Acquire saved passwords (dial-up, MSN messenger, browser, PSSP) on emulated computer
- Skip login password to emulate suspect OS
- Emulate mounted raw, 001, or E01 image files, and physical disk with write-blocker



Specifications:

Item	Specification
Product Name	Forensic Magicube
Model	MagiQ-2
Software	Duplicator software; Forensics Analysis Software (optional)
Source	SATA/SAS x 2; IDE x 1, USB x 1
Target	SATA/SAS x 2
OS	Windows 7 Ultimate 64-bit Embedded Version
CPU	Intel i7 3720-QM
MEM	16GB
Hard Drive	500GB 7200rpm Seagate Hybrid Hard Drive
Dimension (L * W * H)	310 x 310 x 90 mm
Package Dimension	600 x 220 x 600 mm
Weight	4.5KG (total weight with package: 18.7KG)
Voltage Input	DC 12V
Environmental Temperature	0~40°C
Power	150w, 40.5w for standby
<i>Specifications are subject to change without notice.</i>	